

Ersatzteilliste

Spare Parts List

Flammstrahl-Einsätze STAR

Typ T-A/PM 50 – 150 mm

Brenngase: Acetylen, Propan, Methan

SPARE PARTS LIST

Flame washing attachment STAR

Type of gases: acetylene, propane, methane

LISTE DES PIÈCES DE RECHANGE

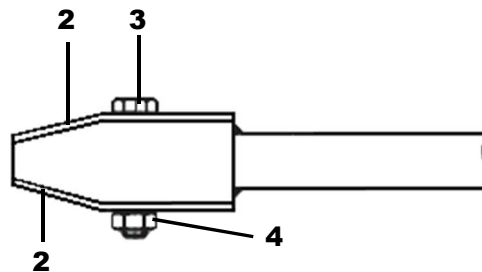
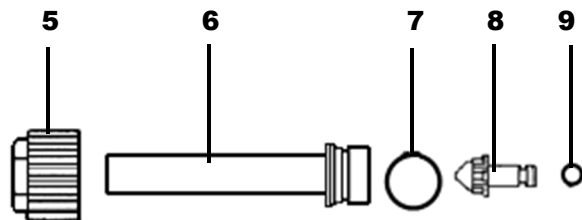
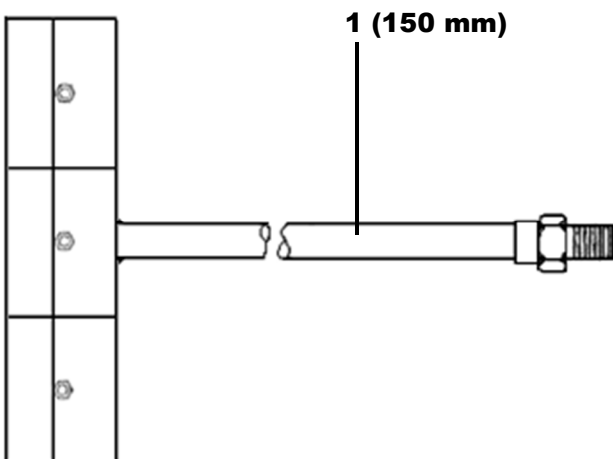
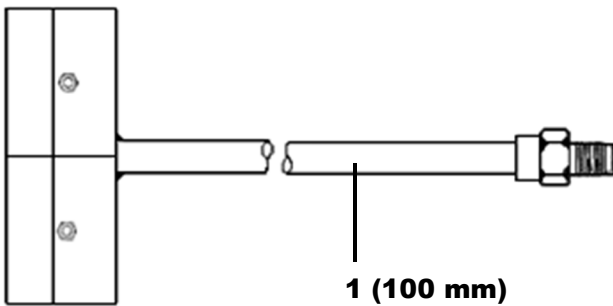
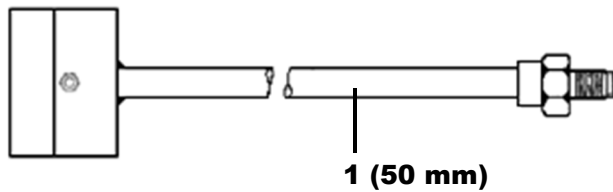
Insert à jet de flamme STAR

Type de gaz : acétylène, propane, méthane

LISTA DE REQUESTOS

Inserto de chorro de llama STAR

Tipo de gas: acetileno, propano, metano



Pos. Item Pos	Benennung Description Désignation Nombre	Sach. Nr. / Art. no. No. d'article / Art. No.		
		50 mm A	100 mm A	150 mm A
1 – 9	Flammstrahl-Einsatz STAR Flame washing attachment STAR Insert à jet de flamme STAR Inserto de chorro de llama STAR	716.00520	716.00521	716.00522
1	Vorderteil gelötet Front part soldered Partie avant brasée Sección frontal de soldada	716.00660	716.00661	716.00662
2	Schleifblech Grinding plate Plaque abrasive Placa abrasiva	716.00700	→	→
3	Sechskantschraube M4 x 22 Hexagon screw Boulon hexagonal Perno hexagonal	175.52020	→	→
4	Sechskantmutter M4 Hexagonal nut Écrou hexagonal Tuerca hexagonal	281.005	→	→
5	Anschlussmutter Connecting nut Capuchon de raccord Tuerca de conexión	242.52020	→	→
6	Mischdüse Mixing nozzle Buse mélangeuse Boquilla de mezcla	716.01911	716.00670	716.00671
7	O-Ring 16 x 2 O-ring Joint torique Anillo en O	032.0110	→	→
8	Druckdüse Pressure nozzle Buse de pression Boquilla de presión	716.04956	716.04958	716.04959
9	O-Ring 5 x 1,5 O-ring Joint torique Anillo en O	673.29059	→	→

Pos. Item Pos	Benennung Description Désignation Nombre	Sach. Nr. / Art. no. No. d'article / Art. No.		
		50 mm PM	100 mm PM	150 mm PM
1 – 9	Flammstrahl-Einsatz STAR Flame washing attachment STAR Insert à jet de flamme STAR Inserto de chorro de llama STAR	716.00523	716.00524	716.00525
1	Vorderteil gelötet Front part soldered Partie avant brasée Sección frontal de soldada	716.00663	716.00664	716.00665
2	Schleifblech Grinding plate Plaque abrasive Placa abrasiva	716.00700	→	→
3	Sechskantschraube M4 x 22 Hexagon screw Boulon hexagonal Perno hexagonal	175.52020	→	→
4	Sechskantmutter M4 Hexagonal nut Écrou hexagonal Tuerca hexagonal	281.005	→	→
5	Anschlussmutter Connecting nut Capuchon de raccord Tuerca de conexión	242.52020	→	→

Pos. Item Pos	Benennung Description Désignation Nombre	Sach. Nr. / Art. no. No. d'article / Art. No.		
		50 mm PM	100 mm PM	150 mm PM
6	Mischdüse Mixing nozzle Buse mélangeuse Boquilla de mezcla	716.01910	716.00673	716.00063
7	O-Ring 16 x 2 O-ring Joint torique Anillo en O	032.0110	→	→
8	Druckdüse Pressure nozzle Buse de pression Boquilla de presión	716.05123	716.05124	716.05125
9	O-Ring 5 x 1,5 O-ring Joint torique Anillo en O	673.29059	→	→

Bitte Reparaturanleitung beachten
Please follow the repair instructions
Veuillez respecter les instructions de réparation
Rogamos prestar atención a las instrucciones de
reparación

Änderungen vorbehalten
Subject to alterations
Droit de modification réserve
Salvo modification

MESSER Cutting Systems GmbH
Otto-Hahn-Str. 2-4
D-64823 Groß-Umstadt
Tel.: +49 (0) 6078 787-0
Fax: +49 (0) 6078 787-150
E-Mail: info@messer-cutting.com

© Messer Cutting Systems
® = registriertes Warenzeichen
Quality management system